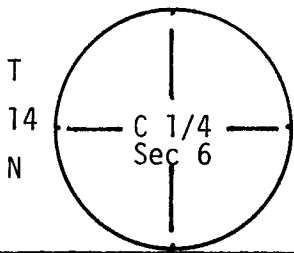


**CERTIFIED LAND CORNER RECORDATION**

R 64 W

DESCRIPTION OF CORNER EVIDENCE FOUND, AND ORIGINAL RECORD (if known)



G.L.O.: None  
Evidence: None

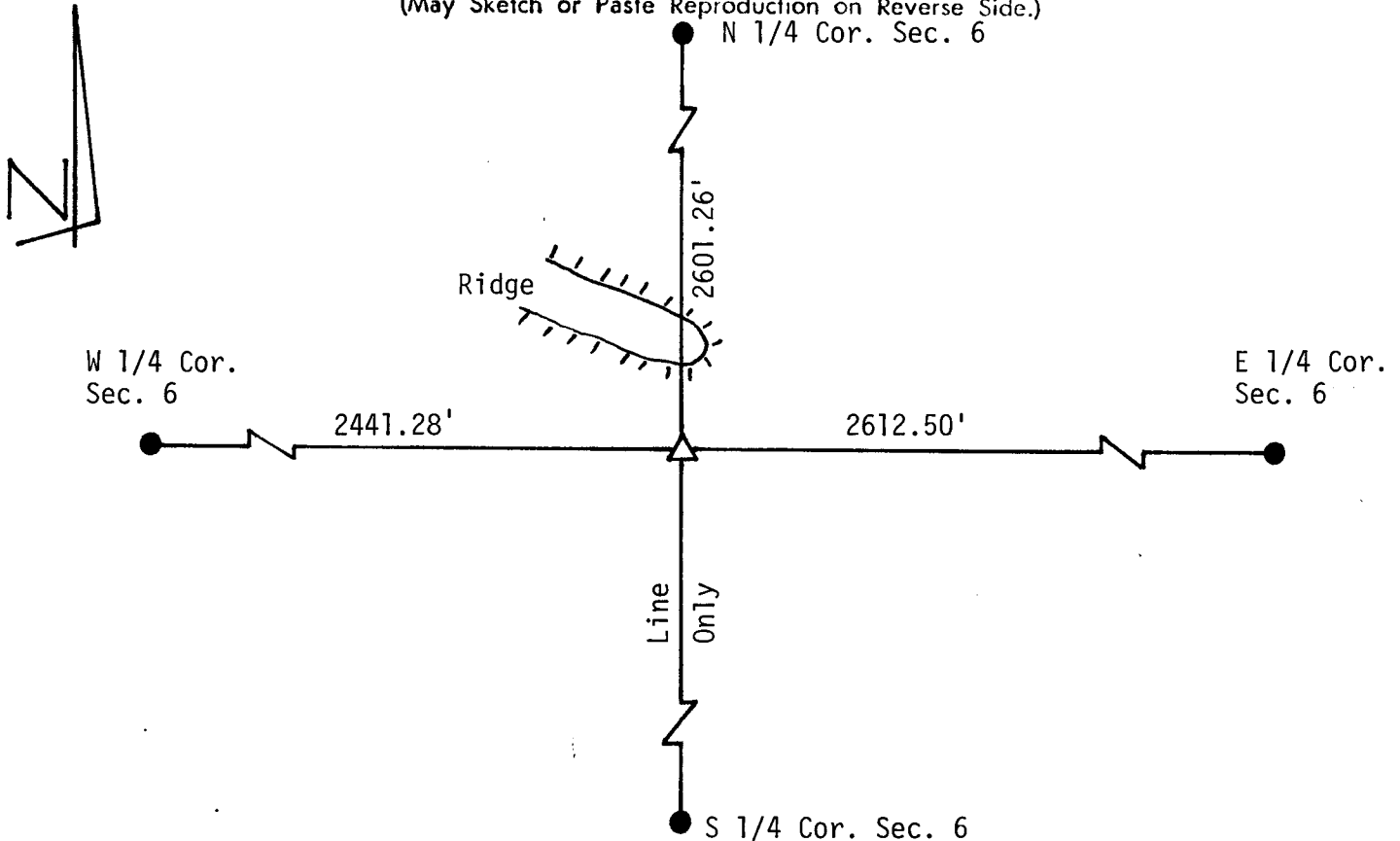
**DESCRIPTION OF MONUMENT AND ACCESSORIES ESTABLISHED TO PERPETUATE THE ORIGINAL LOCATION OF THIS CORNER:**

Set 7/8" Dia. rebar 36" long in accordance with procedures set forth in the "Manual of Surveying Instructions 1973" U.S. Department of the Interior.

See ties below.

**SKETCH, WITH COURSE AND DISTANCE TO ADJACENT CORNER IF DETERMINED IN THIS SURVEY.**

(May Sketch or Paste Reproduction on Reverse Side.)



I, Glen L. Roberts certify that I have carefully performed or reviewed the work done on the diagrammed corner as reported on this recordation form and approve the same.

*Glen L. Roberts* Wyo. P.E. & L.S. 347  
Signature of Surveyor Registration No

STATE OF WYOMING,  
Office of Clerk and Recorder,  
County of Laramie

**622354**

This "corner record" was filed for record on the \_\_\_\_\_ day of \_\_\_\_\_, 19\_\_\_\_, was noted on the cross-index plat and is assigned page No. C-3, in book No. 14-64.

County Official

Cross Index No. _____	T. _____	R. _____	Mer. _____
_____	T. _____	R. _____	Mer. _____
_____	T. _____	R. _____	Mer. _____
_____	T. _____	R. _____	Mer. _____
_____	T. _____	R. _____	Mer. _____
_____	T. _____	R. _____	Mer. _____
_____	T. _____	R. _____	Mer. _____

*C 3 14-64*